

PURESTREAM

PIPING

BY AIRCOM



Purestream Freeze Line Water Pipe & Fittings



✓ Leak Free ✓ Corrosion-Proof ✓ Easy to Install

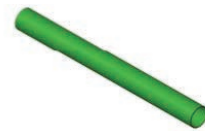
PURESTREAM FREEZE LINE WATER PIPE & FITTINGS

The Purestream FREEZE LINE piping system is designed to transport chilled water and many other fluids and is ideal for use in process cooling applications. The piping and fittings are constructed of corrosion proof heavy gauge PVC plastic that is compatible with chilled water and glycol water mix. It is designed to be easily and quickly installed by plant maintenance staff or plumbing contractors. All that is required by the installer is a saw or pipe cutter and deburring tool and the pipe can be cut to size and the fittings applied as required. The pipe system can be mounted with typical pipe hangers or mounted along a wall or beside equipment by installing our pipe brackets and then assembling the pipe to create a rigid high quality pipe system that can be easily adapted. The pipe system is also compatible with dietary fluids and many other aggressive and non-aggressive chemical fluids.

- Ease of installation
- Cost effectiveness
- Durability
- Reduced labour hours
- Flexibility
- Available from stock

GREEN FREEZE LINE PLASTIC WATER PIPE 4 METRE LENGTH

CODE	Diam. / Length	*Maximum Allowable Working Pressure
FRETU032	32mm/4m/13ft	174 psig
FRETU063	63mm/4m/13ft	145 psig



COUPLING, PLASTIC

CODE	Diam.	*Maximum Allowable Working Pressure
MAPA032	32	174 psig
MAPA063	63	145 psig



90° ELBOW, PLASTIC

CODE	Diam.	*Maximum Allowable Working Pressure
GO90PA032	32	174 psig
GO90PA063	63	145 psig



45° ELBOW, PLASTIC

CODE	Diam.	*Maximum Allowable Working Pressure
GO45PA032	32	174 psig
GO45PA063	63	145 psig



TEE, PLASTIC

CODE	Diam.	*Maximum Allowable Working Pressure
TEPA032	32	174 psig
TEPA063	63	145 psig



NIPPLE SOCKET, PIPE / MALE NPT (PLASTIC)

CODE	Diam.	*Maximum Allowable Working Pressure
MNPA032108	32X1 1/4"	174 psig
MNPA063168	63X2"	145 psig



NIPPLE SOCKET, PIPE / MALE NPT ALUMINUM BODY PLASTIC NUT

CODE	Diam.	*Maximum Allowable Working Pressure
MNMPA032108	32X1 1/4"	174 psig



NIPPLE SOCKET, PIPE / MALE NPT ALUMINUM

CODE	Diam.	*Maximum Allowable Working Pressure
MNMAL0320108NPT	32X1 1/4"	174 psig
MNMAL063168NPT	63X2"	145 psig
MNMAL063208NPT	63X2 1/2"	145 psig



NIPPLE SOCKET, PIPE / FEMALE NPT ALUMINUM BODY PLASTIC NUT

CODE	Diam.	*Maximum Allowable Working Pressure
MPMPA032108	32X1 1/4"	174 psig



NIPPLE SOCKET, PIPE / FEMALE NPT ALUMINUM

CODE	Diam.	*Maximum Allowable Working Pressure
MPMAL032108	32X1 1/4"	175 psig
MPMAL063208	63X2 1/2"	145 psig



END CAP, PLASTIC

CODE	Diam.	*Maximum Allowable Working Pressure
CAPA032	32	174 psig
CAPA063	63	145 psig



QUICK BRANCH DROP LEG TO FEMALE NPT PLASTIC NUT

CODE	Diam.	*Maximum Allowable Working Pressure
DERFF032048	32X1/2"	174 psig
DERFF063048	63X1/2"	145 psig
DERFF063068	63X3/4"	145 psig
DERFF063088	63X1"	145 psig



DEBURRING TOOL

CODE	Diam.	*Maximum Allowable Working Pressure
SM016050	16 - 50	NA
SMTR016050 (with drill con.)	16 - 50	NA
SM063110	63 - 110	NA



FITTINGS WRENCH - PLASTIC FITTINGS

CODE	Diam.	*Maximum Allowable Working Pressure
CLE025032	25 - 32	NA
CLE040050	40 - 50	NA
CLE063	63	NA



FITTINGS WRENCH - ALUMINUM FITTINGS

CODE	Diam.	*Maximum Allowable Working Pressure
CLEAL032040	32 - 40	NA
CLEAL063	63	NA
CLEAL080	80	NA



PIPE / FITTING INSERTION METER 16 - 110

CODE	Diam.	*Maximum Allowable Working Pressure
MIS016080	16 - 80	NA
MISAL020110 ALU FITTINGS	20 - 110	NA



PIPE BRACKET WITH M8 NUT

CODE	Diam.	*Maximum Allowable Working Pressure
FEM8032CF	32	NA
FEM8063CF	63	NA



BRASS PIPE BRACKET THREADED ADAPTERS M8 TO 3/8" THREAD

CODE	Diam.	*Maximum Allowable Working Pressure
FEM16-32 ADAPTER	16-32	NA
FEM40-80 ADAPTER	40-80	NA



PIPE BRACKET SPACERS

CODE	Diam.	*Maximum Allowable Working Pressure
SPE020032	20-32	NA
SPE040063	40-50-63	NA



REPLACEMENT BUSHING INSERT W/ STANDARD O-RING

CODE	Diam.	*Maximum Allowable Working Pressure
BUR032	32	174 PSIG
BUR040AL	40	174 PSIG
BUR063**	63	145 PSIG



***Double Bushing*

REPLACEMENT BUSHING INSERT W/ VITON O-RING

CODE	Diam.	*Maximum Allowable Working Pressure
ORV032	32	174 PSIG
ORV063**	63	145 PSIG



PLASTIC REPLACEMENT NUT AND METAL CLIP RING

CODE	Diam.	*Maximum Allowable Working Pressure
GHRPA032	32	174 PSIG
GHRPA063	63	145 PSIG



ALUMINUM REPLACEMENT NUT AND METAL CLIP RING

CODE	Diam.	*Maximum Allowable Working Pressure
GHRAL032	32	174 PSIG
GHRAL063	63	145 PSIG



DO IT YOURSELF - EASY INSTALLATION!



E-mail: chillers@cagpurification.com
 www.cagpurification.com
 905 820 3348 or 1 800 951 0777

